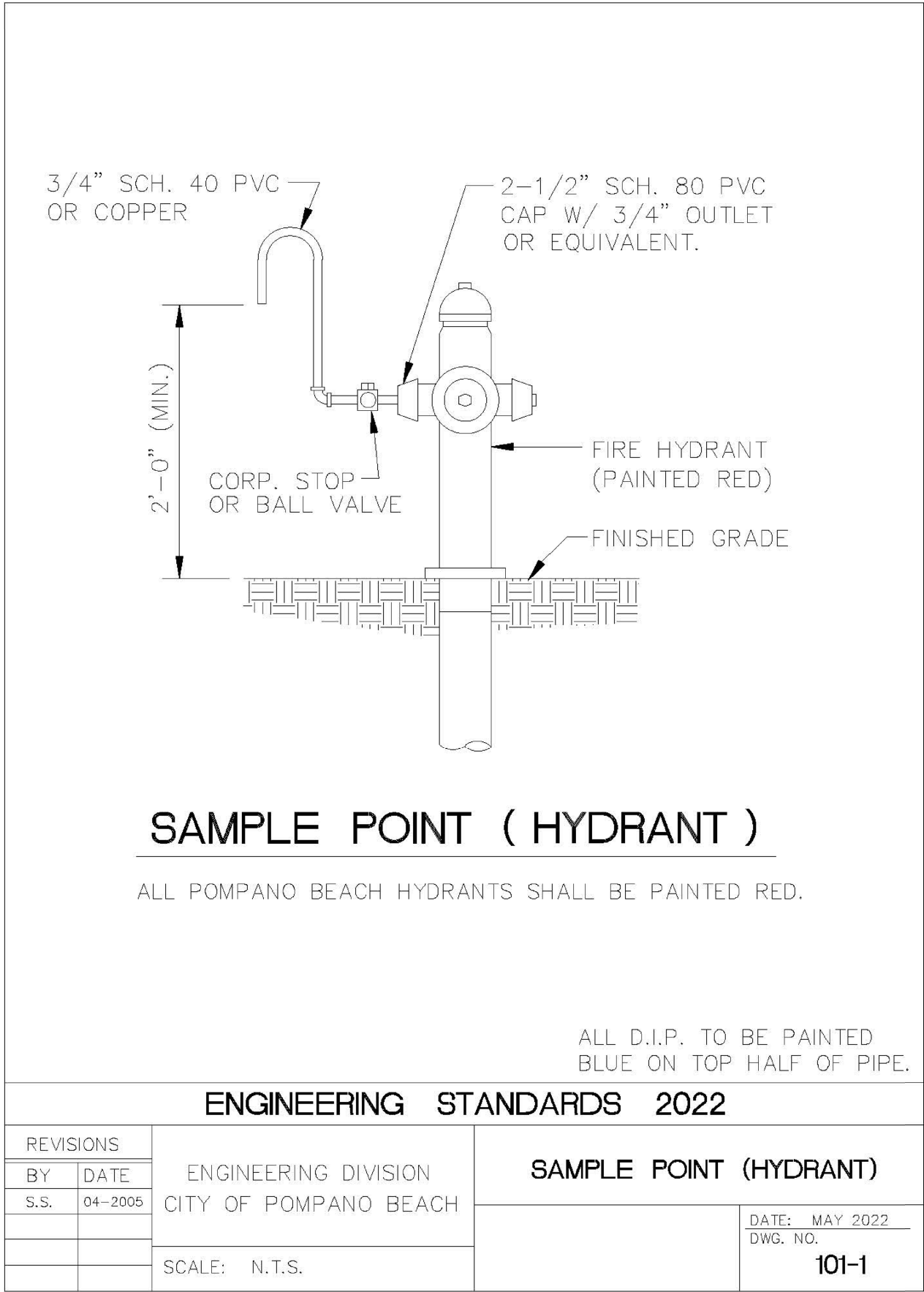


SAMPLE POINT (MAIN)

ALL D.I.P. TO BE PAINTED
BLUE ON TOP HALF OF PIPE.

ENGINEERING STANDARDS 2022			
REVISIONS		ENGINEERING DIVISION CITY OF POMPAÑO BEACH	SAMPLE POINT (MAIN)
BY	DATE		
S.S.	04-2005		
		SCALE: N.T.S.	DATE: MAY 2022 DWG. NO. 100-1

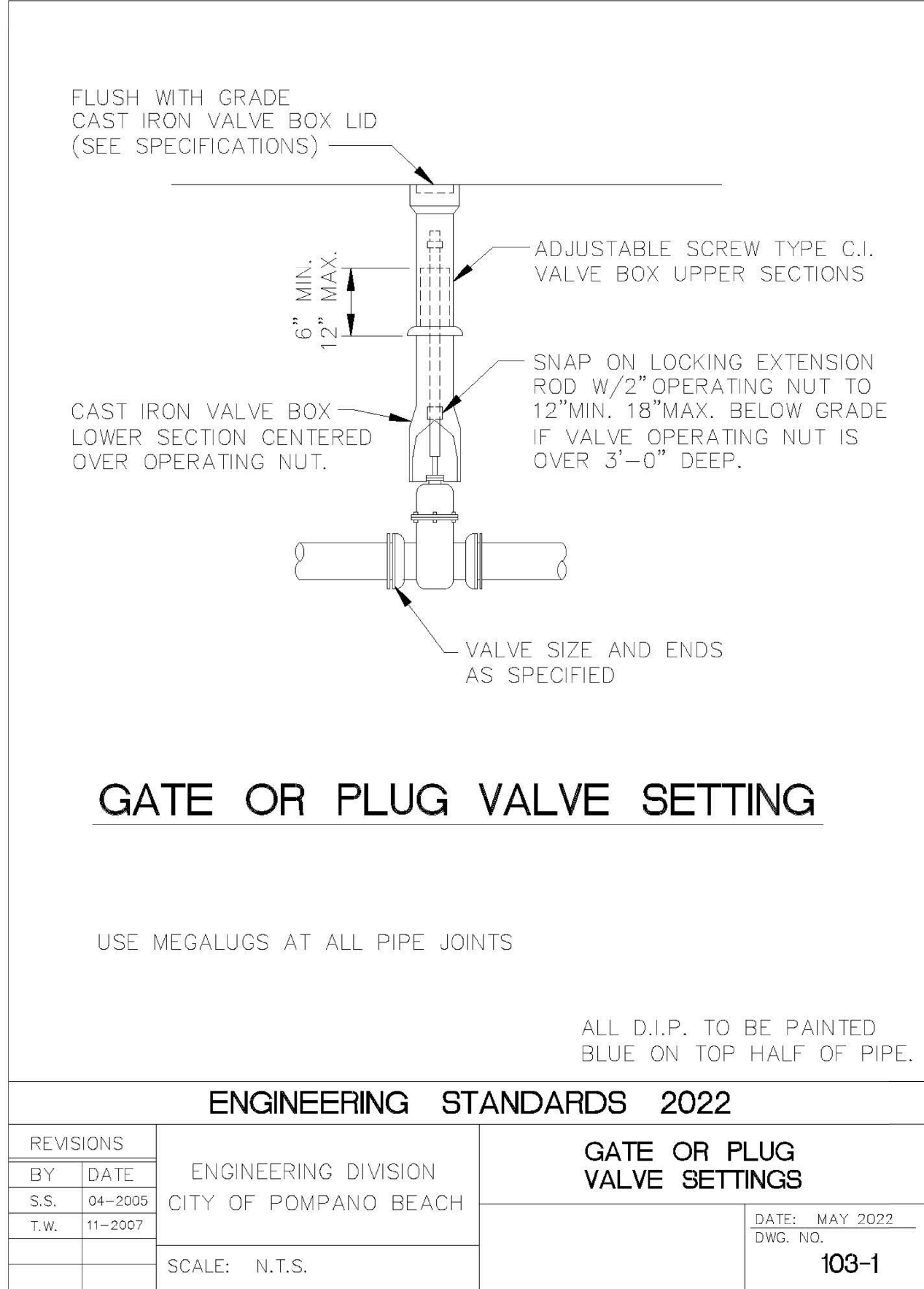


SAMPLE POINT (HYDRANT)

ALL POMPAÑO BEACH HYDRANTS SHALL BE PAINTED RED.

ALL D.I.P. TO BE PAINTED
BLUE ON TOP HALF OF PIPE.

ENGINEERING STANDARDS 2022			
REVISIONS		ENGINEERING DIVISION CITY OF POMPAÑO BEACH	SAMPLE POINT (HYDRANT)
BY	DATE		
S.S.	04-2005		
		SCALE: N.T.S.	DATE: MAY 2022 DWG. NO. 101-1

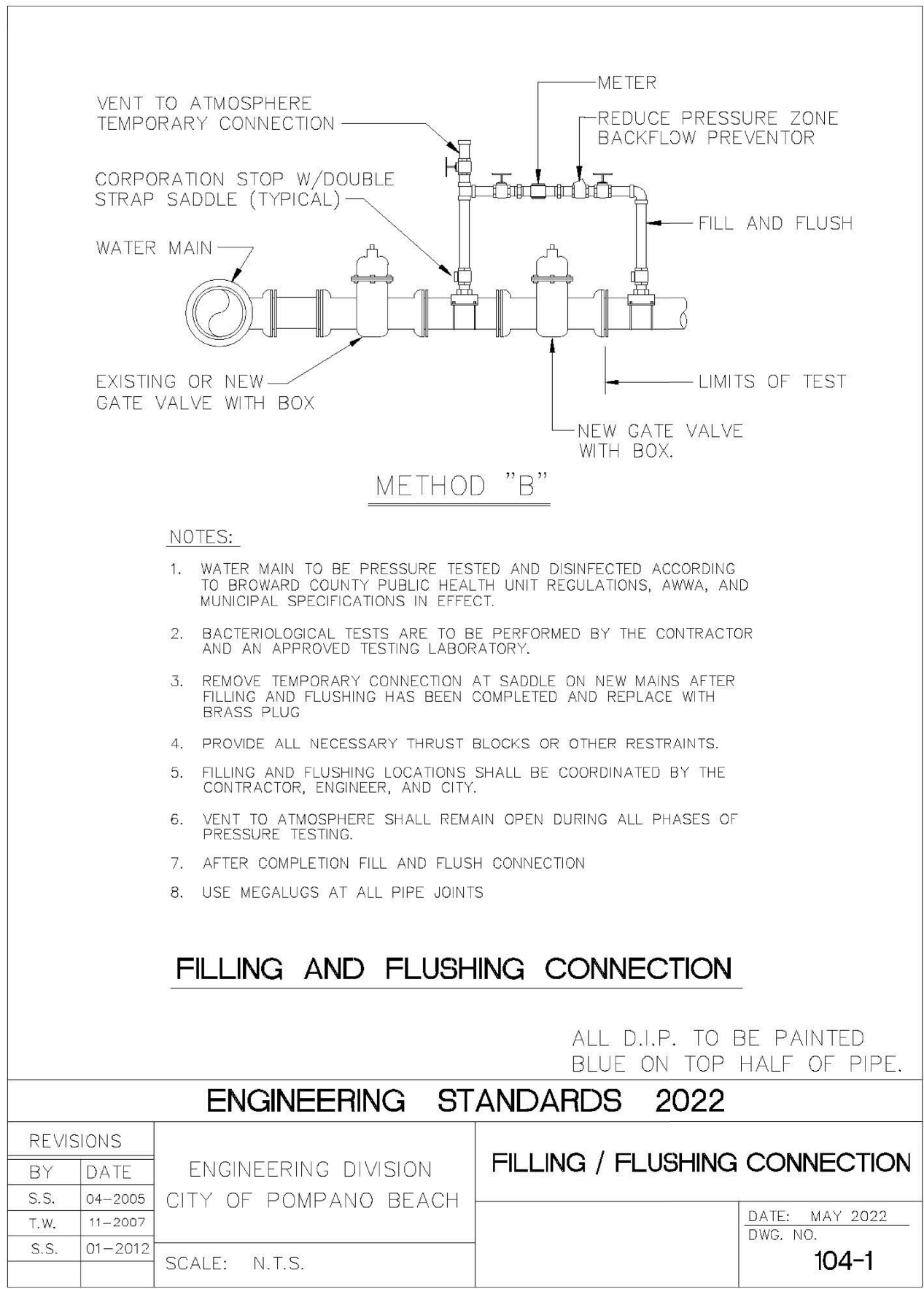


GATE OR PLUG VALVE SETTING

USE MEGALUGS AT ALL PIPE JOINTS

ALL D.I.P. TO BE PAINTED
BLUE ON TOP HALF OF PIPE.

ENGINEERING STANDARDS 2022			
REVISIONS		ENGINEERING DIVISION CITY OF POMPAÑO BEACH	GATE OR PLUG VALVE SETTINGS
BY	DATE		
S.S.	04-2005		
T.W.	11-2007		
		SCALE: N.T.S.	DATE: MAY 2022 DWG. NO. 103-1

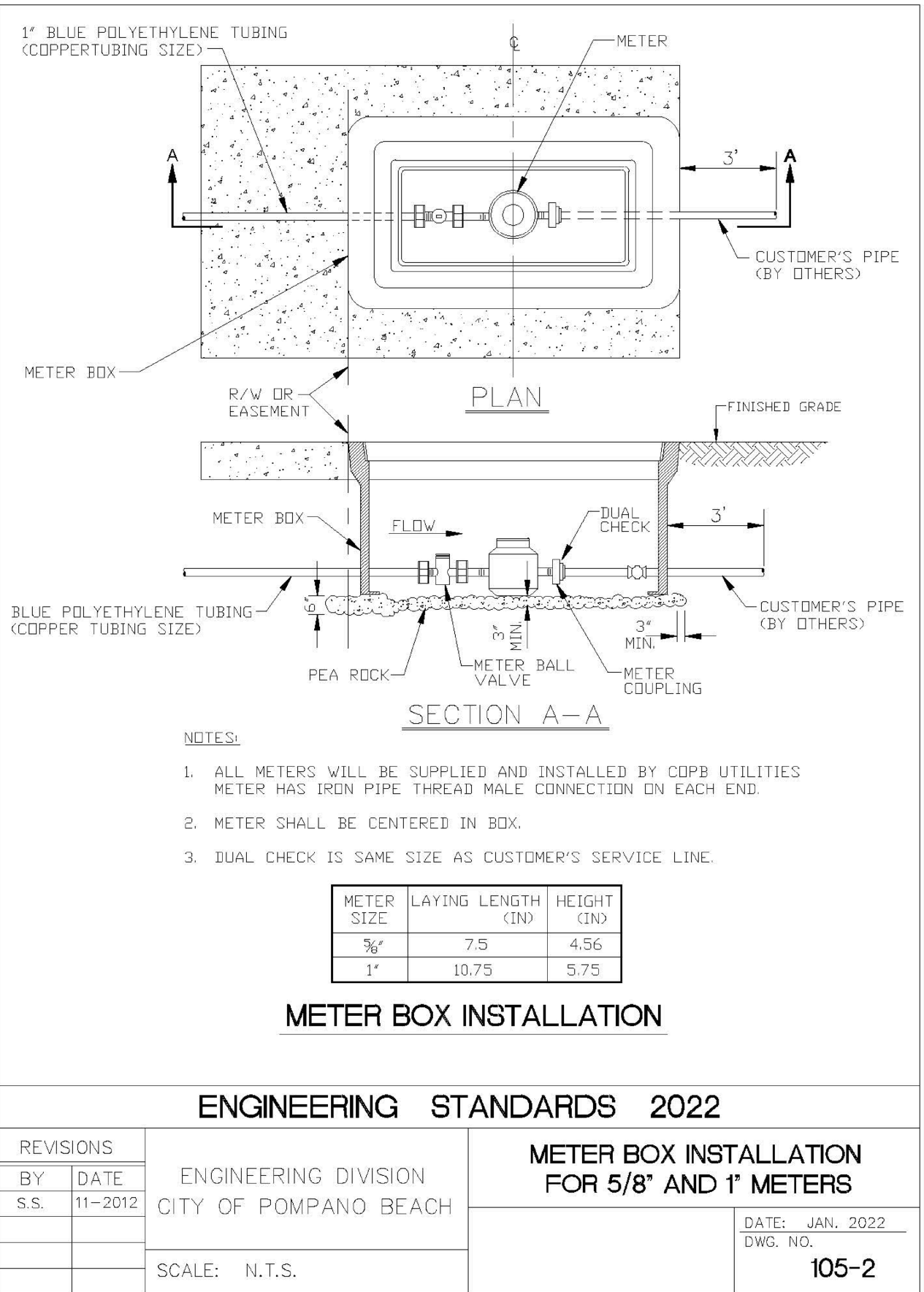


- NOTES:
1. WATER MAIN TO BE PRESSURE TESTED AND DISINFECTED ACCORDING TO BROWARD COUNTY PUBLIC HEALTH UNIT REGULATIONS, AWWA, AND MUNICIPAL SPECIFICATIONS IN EFFECT.
 2. BACTERIOLOGICAL TESTS ARE TO BE PERFORMED BY THE CONTRACTOR AND AN APPROVED TESTING LABORATORY.
 3. REMOVE TEMPORARY CONNECTION AT SADDLE ON NEW MAINS AFTER FILLING AND FLUSHING HAS BEEN COMPLETED AND REPLACE WITH BRASS PLUG
 4. PROVIDE ALL NECESSARY THRUST BLOCKS OR OTHER RESTRAINTS.
 5. FILLING AND FLUSHING LOCATIONS SHALL BE COORDINATED BY THE CONTRACTOR, ENGINEER, AND CITY.
 6. VENT TO ATMOSPHERE SHALL REMAIN OPEN DURING ALL PHASES OF PRESSURE TESTING
 7. AFTER COMPLETION FILL AND FLUSH CONNECTION
 8. USE MEGALUGS AT ALL PIPE JOINTS

FILLING AND FLUSHING CONNECTION

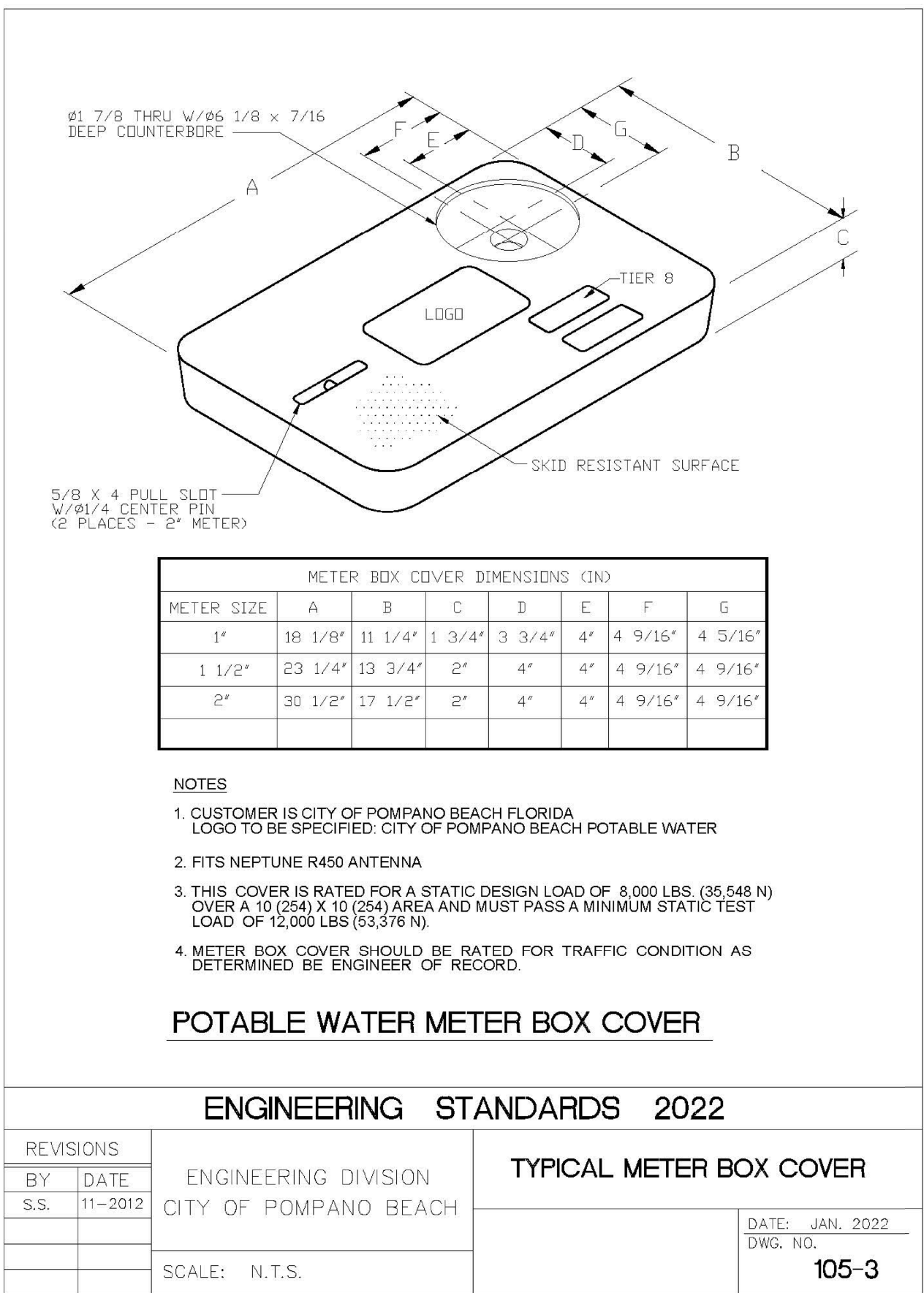
ALL D.I.P. TO BE PAINTED
BLUE ON TOP HALF OF PIPE.

ENGINEERING STANDARDS 2022			
REVISIONS		ENGINEERING DIVISION CITY OF POMPAÑO BEACH	FILLING / FLUSHING CONNECTION
BY	DATE		
S.S.	04-2005		
T.W.	11-2007		
S.S.	01-2012		
		SCALE: N.T.S.	DATE: MAY 2022 DWG. NO. 104-1



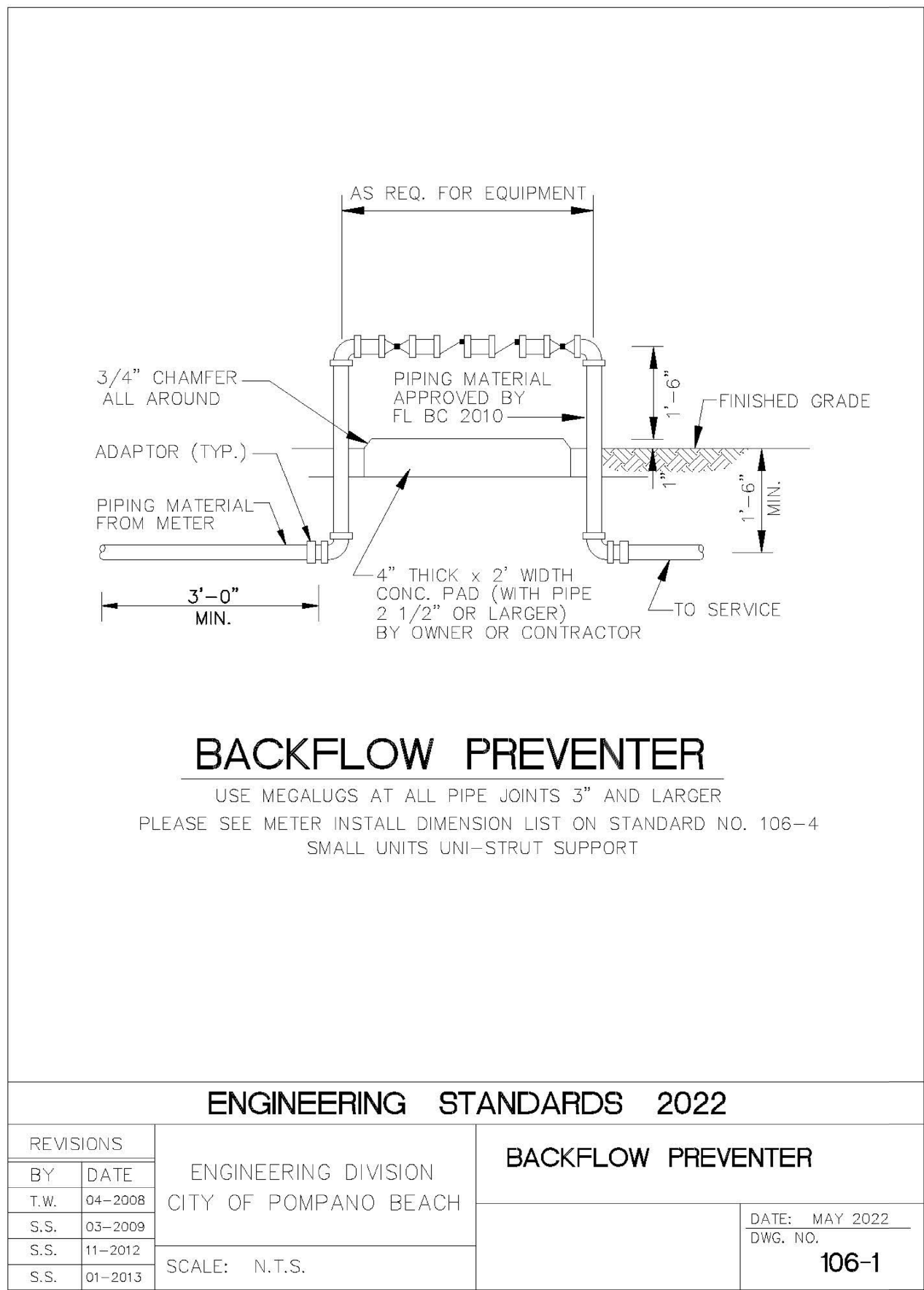
METER BOX INSTALLATION

ENGINEERING STANDARDS 2022			
REVISIONS		ENGINEERING DIVISION CITY OF POMPAÑO BEACH	METER BOX INSTALLATION FOR 5/8" AND 1" METERS
BY	DATE		
S.S.	11-2012		
		SCALE: N.T.S.	DATE: JAN. 2022 DWG. NO. 105-2



POTABLE WATER METER BOX COVER

ENGINEERING STANDARDS 2022			
REVISIONS		ENGINEERING DIVISION CITY OF POMPAÑO BEACH	TYPICAL METER BOX COVER
BY	DATE		
S.S.	04-2008		
S.S.	03-2009		
S.S.	11-2012		
S.S.	01-2013		
		SCALE: N.T.S.	DATE: JAN. 2022 DWG. NO. 105-3



BACKFLOW PREVENTER

USE MEGALUGS AT ALL PIPE JOINTS 3" AND LARGER
PLEASE SEE METER INSTALL DIMENSION LIST ON STANDARD NO. 106-4
SMALL UNITS UNI-STRUT SUPPORT

ENGINEERING STANDARDS 2022			
REVISIONS		ENGINEERING DIVISION CITY OF POMPAÑO BEACH	BACKFLOW PREVENTER
BY	DATE		
T.W.	04-2008		
S.S.	03-2009		
S.S.	11-2012		
S.S.	01-2013		
		SCALE: N.T.S.	DATE: MAY 2022 DWG. NO. 106-1

Digitally signed
by Bealinda M Pell
DN: c=US,
o=Florida,
dnQualifier=A014
10D0000017F86C
8143E00037A12,
cn=Bealinda M
Pell
Date: 2023.12.01
22:46:48 -05'00'



Know what's below.
Call before you dig.

DRC
PZ23-12000009
01/17/2024

DESIGNED: WFI DATE: 01/2023
DRAWN: WFI DATE: 01/2023
CHECKED: BMP DATE: 11/2023
PUBLISHED: 12/11/2023, 5:09:58 PM

WINNINGHAM & FRADLEY
ENGINEERS • PLANNERS • SURVEYORS
111 N.E. 44th STREET • OAKLAND PARK, FL 33334
954.771.7440 fax: 954.771.0298 • EB.LB. 0002995 • www.winfrad.com

PALM AIRE TENNIS CENTER
RWB / LINARES ARCHITECTURE

CITY OF POMPAÑO BEACH
STANDARD WATER DETAILS

APPROVED: EB-0002995
DATE: LB-0002995
PROJECT NUMBER: 22036 SHEET: WD1 OF 4